



together we are
nugent

Specialist Children's Support

Introduction

Nugent

Nugent is a **not-for-profit** organisation established in 1881. Our ISO 9001 certification demonstrates our commitment to quality, effective governance, and operational efficiency. We are dedicated to using our resources – and any income we generate – to deliver high-quality, impactful services that make a real difference in the lives of the individuals and communities we support.

Marydale Lodge

Consisting of two units: Austen & Bronte, Marydale Lodge, situated on the St. Catherine's site, is a secure children's home under Section 25 of the Children Act 1989. We offer a structured and therapeutic setting designed to promote safety, stability, and personal development. In line with the SECURE STAIRS framework, we deliver an integrated model of care that combines onsite health services and education, ensuring each young person receives the holistic support needed to achieve positive and lasting outcomes.

We provide a nurturing environment for children and young people aged 10–18 who require specialist care during periods of significant challenge. Our Ofsted '**Outstanding**' rating, October 2025, reflects the exceptional standards of care, professionalism, and dedication demonstrated by our team.

The Meadows Transition Provision

The Meadows, located next to Marydale Lodge, is a specialist residential children's home providing a warm, safe, and supportive environment. As a transition provision, The Meadows forms a vital part of the specialist children's pathway of care. We offer a structured and therapeutic environment that ensures continuity of support once children have left a secure setting. Helping young people transition safely, while benefiting from the stability, consistency, and positive experiences that high-quality residential care provides.





St. Catherine's Site

Model of Care

Our Model of Care

A Trauma-Informed, Compassion-Focused Pathway

At the heart of our approach is a commitment to trauma-informed, developmentally attuned, whole-system care. We ensure that every aspect of a young person's experience, from health and education to daily interactions with the specialist children's team, is therapeutically informed and psychologically consistent.

Compassion-Focused Foundations

Our integrated model of care is explicitly grounded in **Compassion-Focused Therapy (CFT)**. CFT is a psychological model that helps people understand how threat, shame and self-criticism can develop after trauma, and how to build a kinder internal voice and sense of safety.

Many young people entering secure and specialist care have experienced adversity, relational trauma, exploitation, rejection, or disrupted attachment. These experiences can heighten threat responses, increase emotional dysregulation, and embed patterns of shame or self-protection that manifest as risk-taking or harmful behaviours.

Through a compassion-focused lens, we:

- Understand behaviour as communication rooted in past experience
- Promote emotional regulation and self-soothing skills
- Support young people to reduce shame and self-criticism
- Develop reflective and emotionally attuned staff practice

Compassion is therefore not an add-on intervention, it is a fundamental principle that shapes the very culture of our homes.

Secure Care: Integrated and Formulation-Led

Within our specialist children's homes, our care model reflects national best practice through:

- **Integrated Multi-Disciplinary Care**

Health, education, care and psychology teams work collaboratively to develop a shared understanding of each young person. Consistent with SECURE STAIRS principles, this includes co-produced psychological formulation that informs day-to-day care planning.

- **Relational Safety**

Feeling safe is about more than the environment, it's about relationships. Alongside physical safety, we nurture emotional security through consistent routines, skilled teams and reflective practice. This helps create spaces that are steady and reassuring, where young people feel understood, supported and able to grow.

- **Reflective and Supported Staff Teams**

Compassion-focused environments require supported staff. Regular supervision, reflective spaces and psychologically informed leadership ensure colleagues remain regulated, consistent and able to model healthy relational responses.

- **Early and Embedded Transition Planning**

We see each secure placement as part of a wider journey, supporting young people towards greater stability, growing independence and, where possible, reconnecting with their families and communities.

The Meadows

A Structured Step-Down and Reintegration Model

The Meadows is a specialist residential transition home for young people aged 12–17, predominantly those stepping down from secure care.

It supports a smooth transition between:

- Highly structured secure provision
- Community-based living with reduced restrictions
- Increased independence and social integration

The Meadows Model: Gradual, Supported Reintegration

The Meadows Model offers a supported step-down pathway, maintaining the psychological consistency and therapeutic foundations of Marydale Lodge.

The Meadows Model includes:

Continuity of Psychological Understanding

The formulation developed in secure care follows the young person into The Meadows. This ensures:

- No loss of therapeutic narrative
- Consistent relational responses
- Clear understanding of triggers and protective factors

High Support with Increasing Responsibility

With 2:1 staffing and a smaller home environment, young people benefit from:

- Supported access to community education and activities
- Skill-building in daily living, emotional regulation and decision-making

Compassion-Focused Transition Work

Transition itself can evoke anxiety, shame, or fear of failure. Using CFT principles, staff support young people to:

- Manage perceived threat associated with change
- Develop confidence in independent coping
- Reframe setbacks as learning rather than failure

Multi-Agency Partnership

Working closely with multi-agency partners across social care, education, health and family networks, The Meadows ensures that:

- Risk management plans evolve appropriately
- Education and health provision continue seamlessly
- Families and carers are involved where appropriate
- Transition planning is structured, realistic and child-centred

Compassion-Focused Foundations

Together, Marydale Lodge and The Meadows form a cohesive therapeutic pathway:

Secure Care → Structured Transition Home → Community Reintegration

Our model ensures that young people do not simply leave secure care, they progress through a psychologically consistent, relationally safe and developmentally appropriate journey toward stability, resilience and independence.



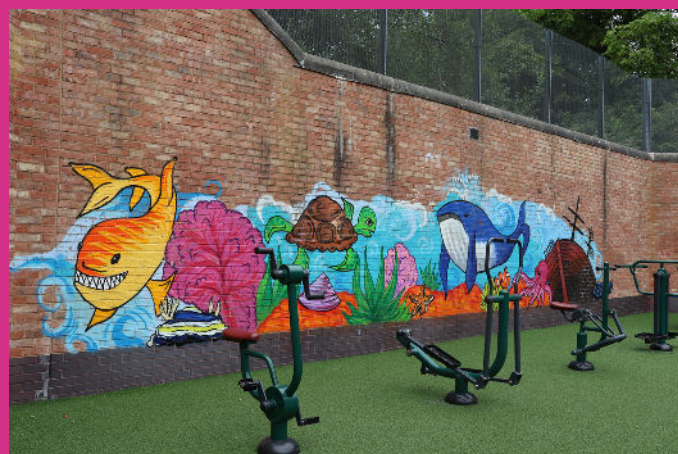
Marydale Secure Children's Home

Key Information

- For ages 10 - 18
- 12 bedrooms
- High quality 24/7 support

Facilities

- Range of education classrooms
- Large sports hall
- 2 activity yards
- Music room
- Gym
- Sensory room
- 2 garden spaces



Marydale Floor Plan



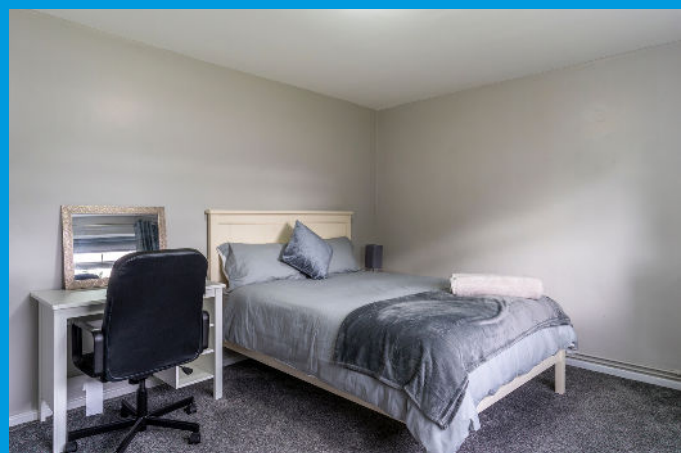
The Meadows Transition Home

Key Information

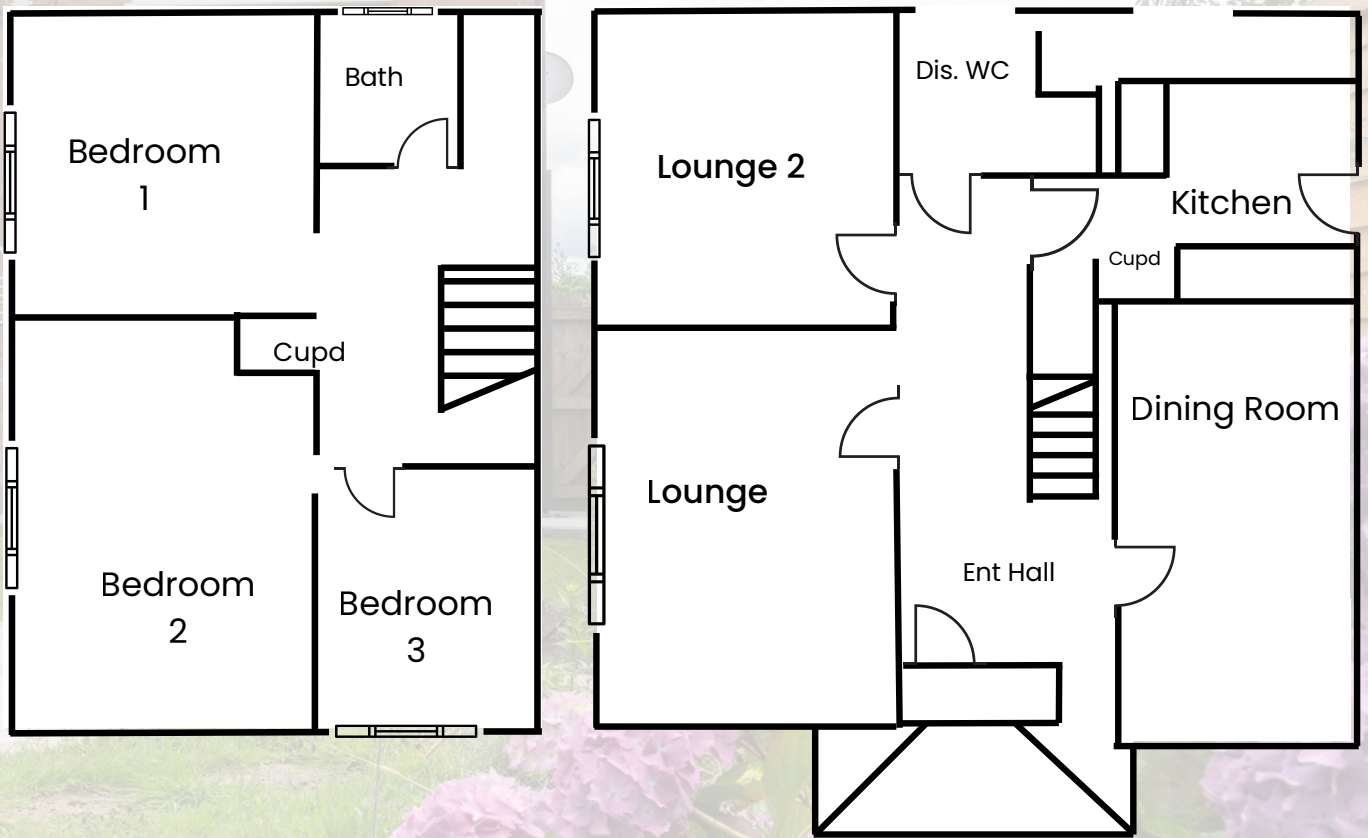
- For ages 12-17
- 3 bedrooms
- High quality 2:1 support
- 24/7 support

Facilities

- Large dining area
- Multiple living rooms
- Group cooking facilities
- Large outdoor space



The Meadows Floor Plan



Imagine Our World Strategic Plan

At Nugent, our vision is rooted in compassion, respect, and innovation. Since 1881, we have been a beacon of hope and strength for individuals, families, and communities in need. Our work continues to evolve, guided by our commitment to meeting the challenges of an ever-changing world.

Our vision is clear: **together, provide a lifelong pathway of support for individuals and communities in need.** This vision underpins everything we do, from supporting children and families to empowering adults and strengthening communities across the North West and beyond.

Nugent's five strategic priorities shape our work today and into the future. We are committed to providing:

- **Accommodation** – Providing safe spaces for those in need
- **Employability** – Empowering individuals with the skills and resources needed to secure employment and build sustainable livelihoods
- **Poverty Alleviation** – Seeking to address all forms of poverty, such as food, hygiene, and financial crisis
- **Quality of Life** – Strengthen the ability of the people we support and our colleagues to sustain a healthy quality of life
- **Making Memories** – Creating opportunities for individuals and families to experience joy, break cycles of adversity and create lasting memories

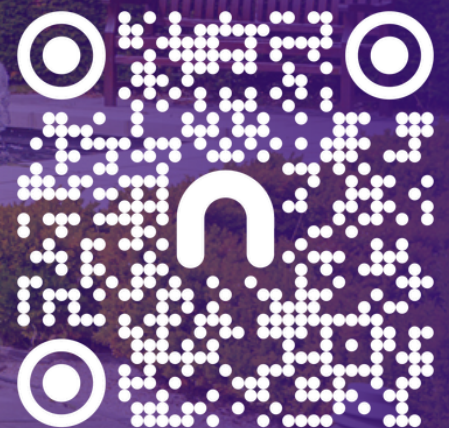
As one of the North West's longest-serving social care charities, Nugent is dedicated to working in partnership with local authorities, businesses, and community groups to drive positive change. By combining our experience with a forward-looking approach, we continue to adapt our services, ensuring we remain a vital part of the social care landscape.

Together, we are building stronger, fairer, and more compassionate communities, one pathway of support at a time.

To learn more: wearenugent.org

To view Nugent's Strategic Plan, scan the QR code below or visit:

<https://wearenugent.org/imagine-our-world-strategic-plan/>



The Nugent Vision

Together, provide a lifelong pathway of support for individuals and communities in need

Families

Education

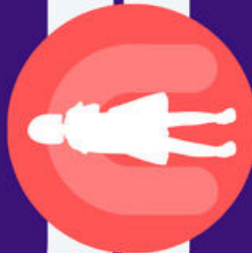
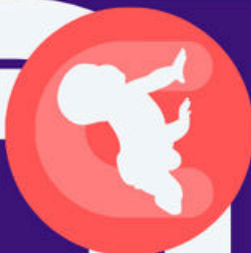
Children's

Adults

Our Future Now

Property

Pathway Alliance



Accommodation

Employability

Poverty Alleviation

Quality of Life

Making Memories



The Meadows

Scan to
view our
Strategic
Plan



together we are
nugent

Contact

For further information or to make a referral contact our referral team via phone, email, or our website.

 0151 261 2000

 marydalemanagement@wearenugent.org

 www.wearenugent.org