

TOGETHER.



IMAGINE OUR WORLD

Accommodation: Building the
Foundations for Brighter Futures

IN THIS ISSUE

WELCOME	03
IMAGINE OUR WORLD	04
FATHER JAMES NUGENT	06
IMAGINE OUR WORLD: ON AIR	08
OUR SERVICES	10
NUGENT AT MIPIM 2026	11
A YEAR OF IMPACT, COMMUNITY AND AMBITION	12
MEET OUR NUGENT TRUSTEES	15
MAKING A DIFFERENCE EVERY DAY	16
OUR FUTURE NOW	18
FOOD PANTRY IN ACTION	20
CELEBRATING OUR VOLUNTEERS	21



WELCOME FROM JO HENNEY, NUGENT CHIEF EXECUTIVE

Welcome to the first edition of Together.

This new magazine reflects the shared ambition and collective effort that drives Nugent forward each day. It is an opportunity to celebrate the people we support, the dedication of our colleagues and volunteers, the strength of our partnerships, and the impact we continue to make across the North West.

In this edition, we spotlight accommodation – a core priority within our Imagine Our World strategic plan. Safe, stable and high-quality homes are fundamental to transforming lives, and strengthening our accommodation offer is key to how we support children, young people and adults to flourish. With my upcoming attendance at MIPIM, alongside John Simms, our Property and Commercial Executive Director, we will continue to champion the importance of property, partnership and long-term investment in achieving this vision.

I am deeply grateful to our supporters, donors, partners, volunteers and everyone who believes in the work we do. Your generosity and commitment make it possible for us to deliver vital services, create life-changing opportunities, and reach more people across the North West.

Now, in 2026, our 145th year, we remain focused on ensuring the people we support, now and in the future, are at the heart of every decision we make. Thank you to our dedicated colleagues who go above and beyond every day to support others when it matters most. Together, we will keep building a future full of possibility as we continue to Imagine Our World.

We look forward to sharing more stories of impact and progress with you throughout the year, with future editions of Together magazine coming in June and November.


Jo Henney

IMAGINE OUR WORLD

Nugent's Strategic Plan 2025 & Beyond

Building a world of
opportunity, dignity
and hope.



At Nugent, we believe in a world where every person has the opportunity to thrive, regardless of circumstances. That belief has guided us since 1881, and continues to inspire the work we do today.

We're proud to share our strategic plan:
Imagine Our World.

This plan sets out our collective vision for the future, one that builds on our legacy, responds to the challenges of today, and looks ahead with hope and purpose. It's rooted in compassion, collaboration, and the belief that real, lasting change happens when we work together.

What's inside the plan?

Our strategy focuses on five key priorities that will guide our work into the future:

Accommodation: Providing safe spaces for those in need

Employability: Empowering people with the skills and resources to secure meaningful employment

Poverty Alleviation: Addressing all forms of poverty, including food, hygiene, and financial hardship

Quality of Life: Supporting healthy, fulfilling lives for the people we support and our colleagues

Making Memories: Creating joyful experiences that break cycles of adversity and help people thrive.

These priorities are built on the strength of our people, our teams, our partners, and the individuals who inspire us every day.

'Imagine Our World is more than a document, it's a shared commitment. It reflects the passion and dedication of the Nugent team and the hopes of the communities we support. Together, we can create a future filled with possibility, dignity, and joy.'

Jo Henney, Chief Executive, Nugent



Join us on the journey

We know we can't do this alone. Whether you're someone we support, a colleague, a partner organisation, a donor or a supporter, you're part of the journey.

We invite you to explore the plan and walk with us as we imagine, shape, and build a world filled with possibility, together.

To view Nugent's Strategic Plan, scan the QR code or visit: wearenugent.org/Imagine-our-world-strategic-plan



WHY OUR STRATEGIC PLAN MATTERS

141%

Between 2017/18 and 2023/24, rough sleeping in Liverpool increased by 141%

<https://www.bbc.co.uk/news/articles/ckgwlmknv0#-text=As%20the%20council%20has%20said%20it%20is%20the%20last%20six%20years>

Liverpool ranks as the

3rd

most deprived local authority in England, with significant challenges in income, employment, health, and living environment

<https://liverpool.gov.uk/council/key-statistics-and-data/headline-indicators/labour-market/>

Care leavers in the North West face some of the highest homelessness rates in the country, with

14% of 18 – 20 year olds

assessed as homeless

<https://becomecharity.org.uk/about-us/news/news/new-homelessness-figures/>

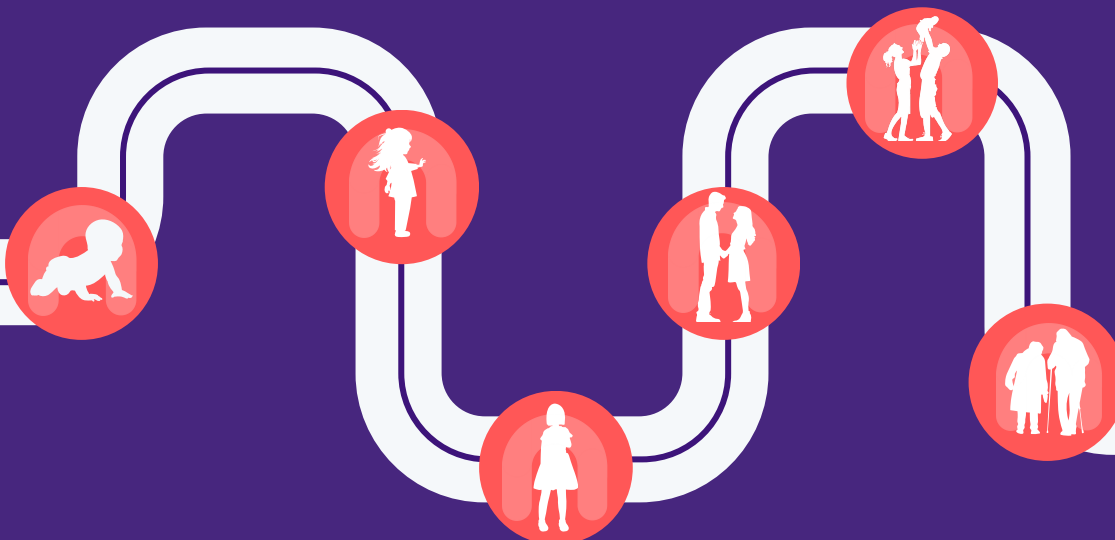
35%

Over a third (35%) of all children in the North West are living in what is called 'relative poverty', after the cost of housing is considered - which is higher than the national average standing at 31%

https://landchildpoverty.org.uk/en/id_poverty_2025/

THE NUGENT VISION

Together, provide a lifelong pathway of support for individuals and communities in need



Education

Families

Children's

Adults

Our Future Now

Property

Pathway Alliance


Accommodation


Employability


Poverty Alleviation


Quality of Life


Making Memories

FATHER JAMES NUGENT 1822–1905

A legacy of compassion that shaped Liverpool, and continues to shape Nugent today



Father James Nugent was born on 3rd March 1822 in Hunter Street, Liverpool, at a time when the city was rapidly transforming. Once a semi-rural river town, Liverpool had become a bustling centre of trade, immigration, and emigration. With this growth came widespread poverty, overcrowding, and crime. Thousands of families fleeing the Irish Famine arrived only to find squalor and struggle.

Ordained in 1846 at St. Nicholas' Church, Liverpool, Father Nugent began his ministry at St. Alban's, Blackburn, before moving to Wigan and eventually returning to his home parish of St. Nicholas' in 1849. His work quickly turned to the city's most vulnerable; homeless children, the imprisoned, and families living in extreme hardship.

For 22 years as Chaplain at Walton Gaol, Father Nugent studied the causes of crime, believing in addressing its roots rather than its consequences. He famously said:

"There is no more practical school to study mankind than within the walls of a prison."

In 1854, he called a meeting at Liverpool Town Hall with leading citizens and churchmen, urging them to "Save the boy"; a campaign to protect children living on the streets. He later expanded this to "Save the child", coining the phrase "Nobody's Children" for those without a home, family, or hope.



An image depicting "Nobody's Children"

Practical Compassion in Action

Father Nugent believed change had to be practical. His work focused on education, employment, emigration, and opportunity.

- **Education:** He built Liverpool's first Catholic school on Rodney Street, stating that education offered "an incalculable

advantage” towards an honest livelihood.

- **Employment:** He purchased the Clarence Ship to teach boys seamanship and discipline.
- **Emigration:** From 1870, he helped children begin new lives in Canada and the United States.
- **Community & Wellbeing:** He organised free entertainment and social activities to steer people away from alcohol and street crime.



The Clarence "Ship Reformatory" for boys. (Circa 1895)

The Good Shepherd Appeal

In 1902, Father Nugent launched the Good Shepherd Appeal Collection, inviting the people of Liverpool to support the city's most vulnerable through generosity and compassion. More than a century later, the Good Shepherd Appeal continues today, standing as one of the most enduring examples of his belief that communities working together can change lives.



Children navigating life in Liverpool's early 20th-century slums



Bronze statue of Father Nugent in St. John's Gardens, Liverpool

A Legacy That Lives On

Father Nugent worked alongside figures such as magistrate John Rushton, Major Lester, and businessman L.S. Cohen, who later organised the statue in St. John's Gardens to honour his life's work. He was celebrated during his lifetime, marking 50 years in the priesthood in 1896, and receiving a portrait presentation at St. George's Hall in 1897. When he passed away in June 1905, thousands lined the streets of Liverpool as flags flew at half-mast in tribute.

Today, Father Nugent's legacy lives on through Nugent.

Our strategic plan, Imagine Our World, reflects the same values of compassion, dignity, and justice that guided his work. Our vision, "Together, provide a lifelong pathway of support for individuals and communities in need", mirrors his lifelong commitment to protecting the vulnerable and creating opportunity.

From early intervention to lifelong care, from community support to safeguarding the most at risk, we continue to carry forward Father Nugent's vision across the Liverpool City Region and beyond.

To find out more about Nugent's history and Father James Nugent, visit:

wearenugent.org/wp-content/uploads/2025/12/Father-James-Nugent-3.pdf

IMAGINE OUR WORLD

ACCOMMODATION BUILDING THE FOUNDATIONS FOR BRIGHTER FUTURES



As part of Nugent's new Imagine Our World strategy, accommodation plays a vital role in supporting people on their life pathways.

Jo Henney, Chief Executive of Nugent, spoke with John Simms, Executive Director of Property, about how high-quality accommodation underpins safety, stability, and opportunity.



Jo: John, can you start by giving us an overview of Nugent's accommodation services?

John: At Nugent, we provide a wide range of accommodation services across both adult and children's care. We manage several residential properties, many of which are specialist in nature. For example, St Joseph's in Aigburth supports people with acquired brain injuries, requiring a very specific level of accessibility and design. We also operate Lime House, an elderly residential home, and Margaret Roper House, which supports adults with mental health needs. On the children's side, we have Lime Grove Cottage, a registered children's home, and Marydale, one of only 12

secure

children's homes in the country. Each setting is designed to provide a safe, high-quality environment tailored to the needs of those who live there.

Jo: Why is accommodation so central to our new strategic plan?

John: Accommodation provides the foundation for everything else. A safe, secure, high-standard home gives people the stability they need to focus on improving their quality of life, accessing education, building employability skills, and creating positive memories. Without that secure base, it becomes much harder for people to move forward. Our strategy recognises accommodation as the launchpad that enables people to thrive.

Jo: How do we make sure our accommodation supports people's full journey, not just their immediate housing needs?

John: When we acquire or develop new properties, we always consider how people will live in them and what support they'll need. For example, we recently developed a high-quality shared living home for care leavers. Some young people are ready to live independently straight away, but others benefit from peer support and a more gradual transition. Shared living can reduce isolation and provide a supportive environment as they build confidence and independence. Every property is designed with purpose, ensuring it supports the individual's pathway and long-term goals.

Jo: What does an accommodation journey look like from children's services through to independent living?

John: In children's homes, we aim to create a space that feels like a real home, not an institution. The size, layout, and environment are carefully considered to make young people feel safe and settled.

As young people move into care leaving, some choose independent living, while others benefit from shared accommodation with continued support. These homes are designed to be high quality, with private rooms, shared living spaces, and modern facilities.

The ultimate goal is for individuals to move into their own independent accommodation when they're ready, supported by the skills, confidence, and opportunities they've gained along the way.

Jo: Do people need to have been in care to access Nugent's accommodation?

John: Not at all. We support people through many different pathways. For example, we're developing accommodation in Sefton that will support people affected by domestic abuse, helping them rebuild their lives and live independently again. Our aim is to meet the needs of the communities we serve, not limit support to one specific group.

Jo: Why is supported accommodation more important than ever?

John: We're currently facing a national housing crisis, with a significant shortage of homes.



Pictured: The Orchards, Billinge

Nugent is in the process of becoming a registered housing provider so we can help address this need. What makes Nugent different is our focus on people who require specialist support. These individuals can sometimes be overlooked when housing is allocated quickly to meet targets. We want to ensure that people with complex needs still have access to safe, suitable, and supported accommodation.

Jo: How important are partnerships with developers and local authorities?

John: They're essential. We can't achieve our goals alone. By working with developers, we can provide supported housing within new communities and contribute to meaningful placemaking. This ensures that developments include the right mix of homes and services, creating stronger, more inclusive communities where people can truly thrive.

Jo: Any final thoughts on what's next for Nugent's accommodation strategy?

John: As we grow, we're committed to maintaining the high standards of our existing properties while expanding our capacity to support more people. Our focus is on quality, sustainability, and ensuring every person we support has access to a safe home that helps them move forward with confidence.

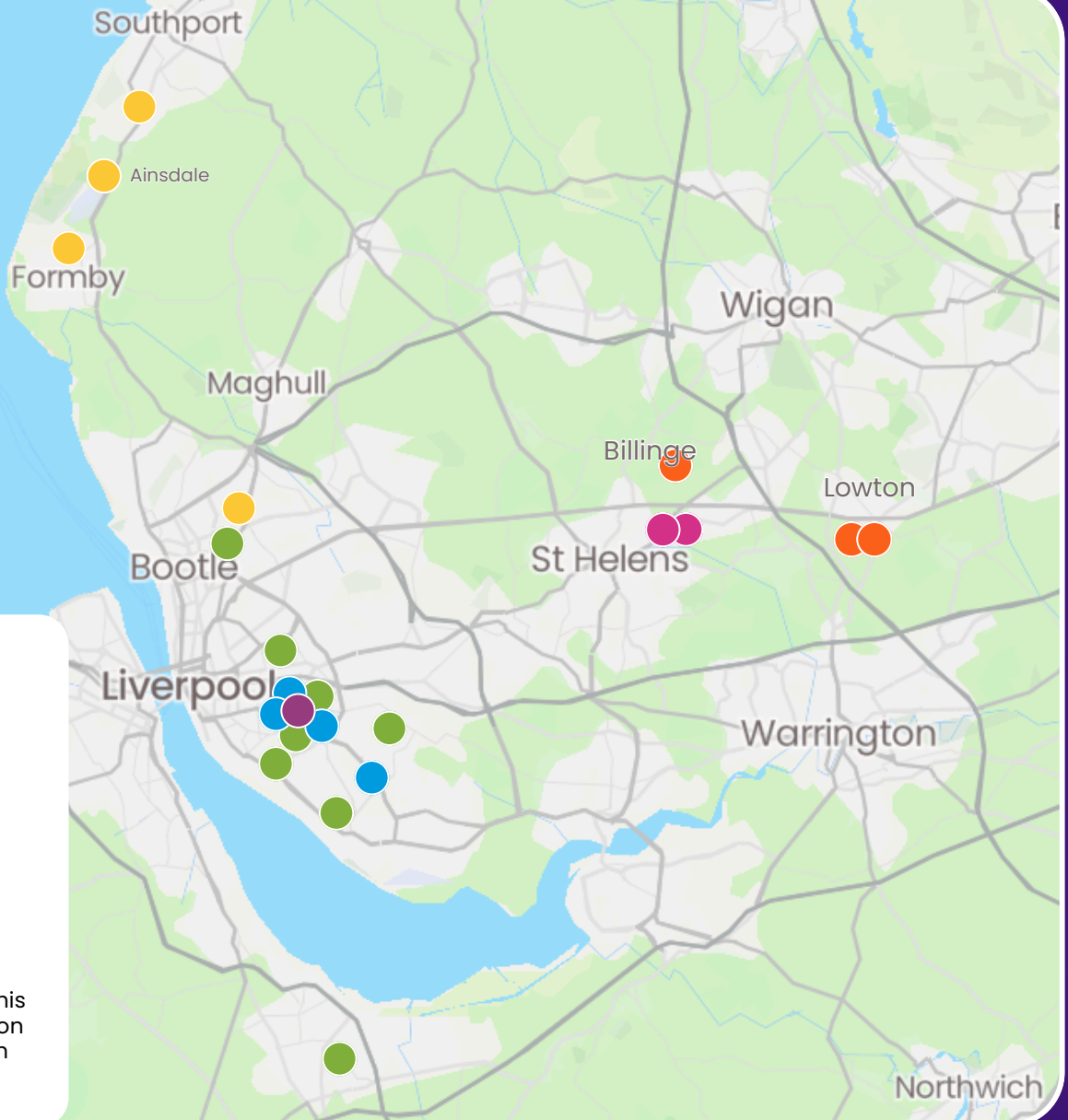
To hear the full conversation with John and explore how accommodation supports our Imagine Our World strategy, listen to the podcast: wearenugent.org/Imagine-our-world-the-podcast-ep-1-accommodation/



Pictured: St. Joseph's Care Home, Aigburth, Liverpool




Scan here to find out more about the services we provide



Key

- Pathway North
- Pathway West
- Pathway East
- Children's and Families Services
- Our Future Now
- 99 Edge Lane

 If you're viewing this map online, click on the circles to learn more about each service

Pathways

North

- **Margaret Roper House**
- **Ainsdale Care in the Community**
- **The Willows**
- **Wadham Road**

East

- **Lime Grove Cottage**
- **Lime House**
- **The Orchards**

West

- **St Joseph's Care Home**
- **Childwall Park Avenue**
- **Lichfield Close**
- **Liverpool ICS**
- **SFX**
- **Hartington Road**
- **New Beginnings**
- **Cheshire Floating Support**

Children's and Families Services

- **Marydale Children's Home**
- **The Meadows**

Our Future Now

- **Charity Shop**
- **Food Pantry**
- **Caritas**
- **Deaf and Sign Community Service**

99 Edge Lane

- **Nugent Head Office**

NUGENT AT MIPIIM 2026



In March 2026, Jo Henney, Chief Executive and John Simms, Property & Commercial Executive Director will attend MIPIIM in Cannes – the international property and real estate event that brings together developers, investors and civic leaders from across the UK and beyond.

Our attendance reflects a key strategic priority: strengthening our housing pathway to ensure long-term sustainability and greater stability for the people we support across the North West, with ambitions to expand our impact across the region.

Moving Towards Registered Provider Status

Nugent is progressing towards becoming a Registered Provider in 2026, a significant milestone in our development.

Achieving this status will strengthen our ability to deliver affordable homes, enhance our financial resilience and support the development of pathway properties that provide safe, secure accommodation for children, young people and adults in our care.



Supporting the North West's Regeneration Ambitions

Across the North West, there is a strong policy focus on inclusive growth, affordable housing delivery, brownfield regeneration and embedding social value into development. From major city-region investment frameworks to local regeneration masterplans, the emphasis is clear: development must create opportunity, tackle inequality and strengthen communities.

Our housing ambitions align closely with these priorities. By engaging at MIPIIM, we are seeking partnerships with socially responsible developers and investors who share a commitment to delivering high-quality, sustainable homes alongside measurable social impact.

Building Homes That Support Futures

Safe, stable housing is fundamental to independence and wellbeing. Across our children's services, supported living and young adults' accommodation, we see first-hand how the right home can transform life chances.

By aligning with the North West's wider regeneration and social value agenda, we are laying the foundations for homes that do more than provide shelter – they create stability, opportunity and brighter futures for the communities we support.

[To hear from Jo and John at MIPIIM 2025 on what MIPIIM means for Nugent visit: \[youtu.be/NEW_zeoiPho\]\(https://youtu.be/NEW_zeoiPho\)](https://youtu.be/NEW_zeoiPho)

A YEAR OF IMPACT, COMMUNITY AND AMBITION: REFLECTING ON NUGENT IN 2025



As we look back on 2025, it's clear that it has been a year defined by courage, compassion and connection across Nugent's services, supporters and communities.

From the icy extremes of the Nugent Arctic Challenge to the powerful solidarity shown during Sleep Out with Nugent, our fundraisers, partners and supporters went above and beyond to help us continue changing lives. These moments were matched by meaningful opportunities to reflect and give thanks through the Good Shepherd Appeal, Good Shepherd Mass, Christmas Mass, and Light Up a Life service at Liverpool Metropolitan Cathedral.

We also made time to celebrate. The iACCORD Awards honoured the dedication and values of our incredible colleagues,

while events such as the Aintree Halloween Family Fun Day and the Nugent Gala 2025 brought people together in celebration of generosity, community and shared purpose.

2025 was also a landmark year for growth and innovation across Nugent. We proudly launched our new strategic plan, Imagine Our World, setting out a bold and ambitious vision for the future. This was supported by the opening of new young adults' homes at The Orchards, SFX and Hartington Road, expanding our reach and strengthening the support available.

Adding a new platform to share our impact, we launched the Imagine Our World podcast, giving a voice to the people, stories and experiences at the heart of Nugent's work.

One of the year's standout moments came when Nugent was named Employer of the Year at the 2025 City of Liverpool Business Awards, a proud recognition of our people, our culture and our commitment to doing things the right way.

None of this would be possible without the continued support of our partners, donors, volunteers and wider community. Your belief in our mission enables us to empower communities, improve life chances and transform lives every day.

Work With Us in 2026

As we move through 2026, we are keen to continue building strong relationships with partners who share our values and ambition. From fundraising and challenge events and sponsorship to longer-term

partnerships and our Pathway Alliance, there are many ways organisations can work alongside Nugent to make a meaningful difference.

We also have exciting opportunities ahead, including our Wadi Rum Challenge in 2027, offering a unique way for corporate teams to get involved, build connections and support life-changing work.

If your organisation would like to explore partnering with Nugent in 2026 and beyond, we'd love to hear from you!

To find out more visit:

wearenugent.org/support-us/corporate-partnerships/

To view Nugent's Year in Review 2025 visit: youtu.be/lvVosFxF5xl



**JOIN US IN
EMPOWERING
COMMUNITIES AND
TRANSFORMING
LIVES.**

ST. JOSEPH'S GARDEN GETS A FRESH NEW LOOK

St. Joseph's Care Home now has a vibrant new garden, thanks to the generosity and hard work of the landscaping team from Aintree and The Jockey Club. Once an unused space, it's now a welcoming area for residents, families, and staff to relax, socialise, and enjoy nature.

Keith Wilde, Nugent's Executive Director of Pathways, said:

"Outdoor spaces play such an important role in wellbeing. This garden will give the people we support at St. Joseph's a safe and peaceful place to unwind. We're incredibly grateful to Aintree and The Jockey Club for making this possible."

Dickon White, Aintree & North West Regional Director at The Jockey Club, added:

"Supporting local causes is key to what we do,

and it's been a privilege to create a space that will bring joy to residents and staff for years to come."

The revitalised garden features new planting, seating areas, and accessible pathways, helping to promote both relaxation and connection. St. Joseph's provides specialist support for people with acquired brain injuries, offering personalised care and rehabilitation.

This project highlights the power of partnerships to make a lasting difference in people's lives.



To view highlights from the day, visit: youtu.be/mubHJtUjzM?si=L7xfiETPMBliup3

 together we are
nugent

WADI RUM CHALLENGE

27th February – 6th March 2027



STEP INTO THE DESERT. CHANGE A LIFE.

We're looking for people with courage, not just to face the desert, but to stand up for those who need it most across the North West.

Get in touch today

To find out more contact:

 fundraising@wearenugent.org

 or visit: wearenugent.org/events

MEET OUR NUGENT TRUSTEES



JOHN-PAUL DENNIS
Chair of Trustee

A trustee for over 12 years, John-Paul brings extensive legal expertise to support strong governance and ensure the people we support receive fair, compassionate, community-focused care.



CANON MICHAEL FITZSIMONS
Vice-Chair of Trustee

A trustee for over 10 years, Michael is a priest and Episcopal Vicar for Education in the Archdiocese of Liverpool. He brings valuable experience in faith, education, and social care to support Nugent's mission.



REVEREND DEACON PAUL ROONEY
Trustee & Archbishop's Appointee

A permanent deacon and senior academic, Paul brings expertise in education and governance, supporting Nugent's mission of compassionate, community-focused care.



ANDREW ALLEN
Trustee & Chair of Governance & Risk Committee

Andrew has supported Nugent for many years and brings over 20 years' experience as a Non-Executive Director, helping drive lasting change for vulnerable people across the region.



CRAIG STEWART
Trustee

Craig, supported by Nugent as a child, now brings his lived experience as a trustee to help shape ethical, sustainable care for children and young people.



WENDY BOWYER
Lead Trustee for Safeguarding

Wendy, Deputy CEO and FE college principal, brings extensive safeguarding experience to support safe, person-centred services for the most vulnerable.



ANDREW NORMAN
Trustee

Andrew, a Chartered Accountant with extensive experience in housing, partnerships, and finance, brings his expertise to Nugent's governance and financial oversight, helping strengthen services across the Liverpool community.



VICTORIA BROWN
Trustee

Victoria is an Independent Trustee, a Chartered CIPD Fellow, and Managing Director of HPC Ltd. She brings senior HR and governance expertise, advising Nugent on workforce strategy, organisational development, and fostering a compassionate culture.



JONATHAN OLIVER
Treasurer Trustee & Chair of Finance & Investments Committee

To find out more about our Nugent Trustees and Leadership Team, visit: wearenugent.org/about-us/#meet-our-leaders

MAKING A DIFFERENCE EVERY DAY

FROM RELIEF SUPPORT WORKER TO EXECUTIVE DIRECTOR KEITH WILDE



Meet one of Nugent’s dedicated leaders, Keith Wilde, who has built an incredible career in social care.

Starting as a Relief Support Worker in 2009, Keith’s commitment and passion for supporting others have driven his progression through multiple roles, including his current position as Executive Director of Pathways. His story is one of perseverance, growth, and a deep dedication to making a meaningful impact in the lives of others.

What motivated you to pursue a career in this sector?

I fell upon it by accident, when I was a club steward I had a customer who would come in regular. He would stand at the end of the bar and discuss his mental health with me, he felt I was a good listener and would offer him advice. He recommended I apply to go and work at the drop in centre he attended and the rest is history so to say.

What personal or professional growth have you experienced in your time at Nugent?

I still feel that everyday is a school day. I learn something new everyday and that can be both personally and professionally, so I feel that I am constantly growing and evolving.

I learn a lot from other people and I would like to think that they learn from me.

What are the most rewarding aspects of your role?

Positive outcomes for people, seeing people progress and move on. One of the biggest things I have experienced has been two of our adults in supported living meet at the service, engage and get married. This is a very rare and unheard of occasion, but should be celebrated.

What would you say to someone considering a career in residential care?

If you demonstrate the right values we can support you in learning and developing with the right skills.

**To explore rewarding career opportunities, visit our website and start your journey with Nugent today:
wearenugent.org/careers**

MARYDALE GETS OUTSTANDING



Marydale Lodge has been rated 'Outstanding' by Ofsted, a fantastic recognition of the safe, nurturing and supportive environment created by the team every day.

This result reflects the high standards at Marydale and the positive experiences and outcomes for the children who live there. It's a testament to the dedication, professionalism and compassion of everyone involved.

Registered Manager Megan Foster said:

"I am incredibly proud of Marydale and the outstanding judgement we achieved in our recent Ofsted inspection. This recognition reflects the unwavering dedication, compassion, and expertise of our entire team. Most importantly, it celebrates the exceptional outcomes our children continue to achieve. Their progress, resilience, and day-to-day successes are at the heart of everything we do, and I am honoured to lead a service that supports them to thrive."

A huge congratulations to the whole Marydale Lodge team, this is something to be incredibly proud of.



LOOKING FOR A CAREER THAT MAKES A DIFFERENCE?

At Nugent, we have a range of opportunities that help make a difference in everyday lives across the North West.

Since 1881, Nugent has been delivering services that truly make a difference to the lives of children, young people, adults, and the communities we support through our care homes and community support services.

To see our current vacancies and how you can join our team, scan the QR code or visit our website below.



0151 261 2000



hr@wearenugent.org



wearenugent.org/careers



together we are
nugent



our future
now
part of the **nugent** family

Our Future Now has been created to focus on providing support across the North West, whenever and wherever it's most needed.



Enhancing Community Engagement

We will increase community engagement, through shorter term interventions, that complement existing, long-term services across Nugent.



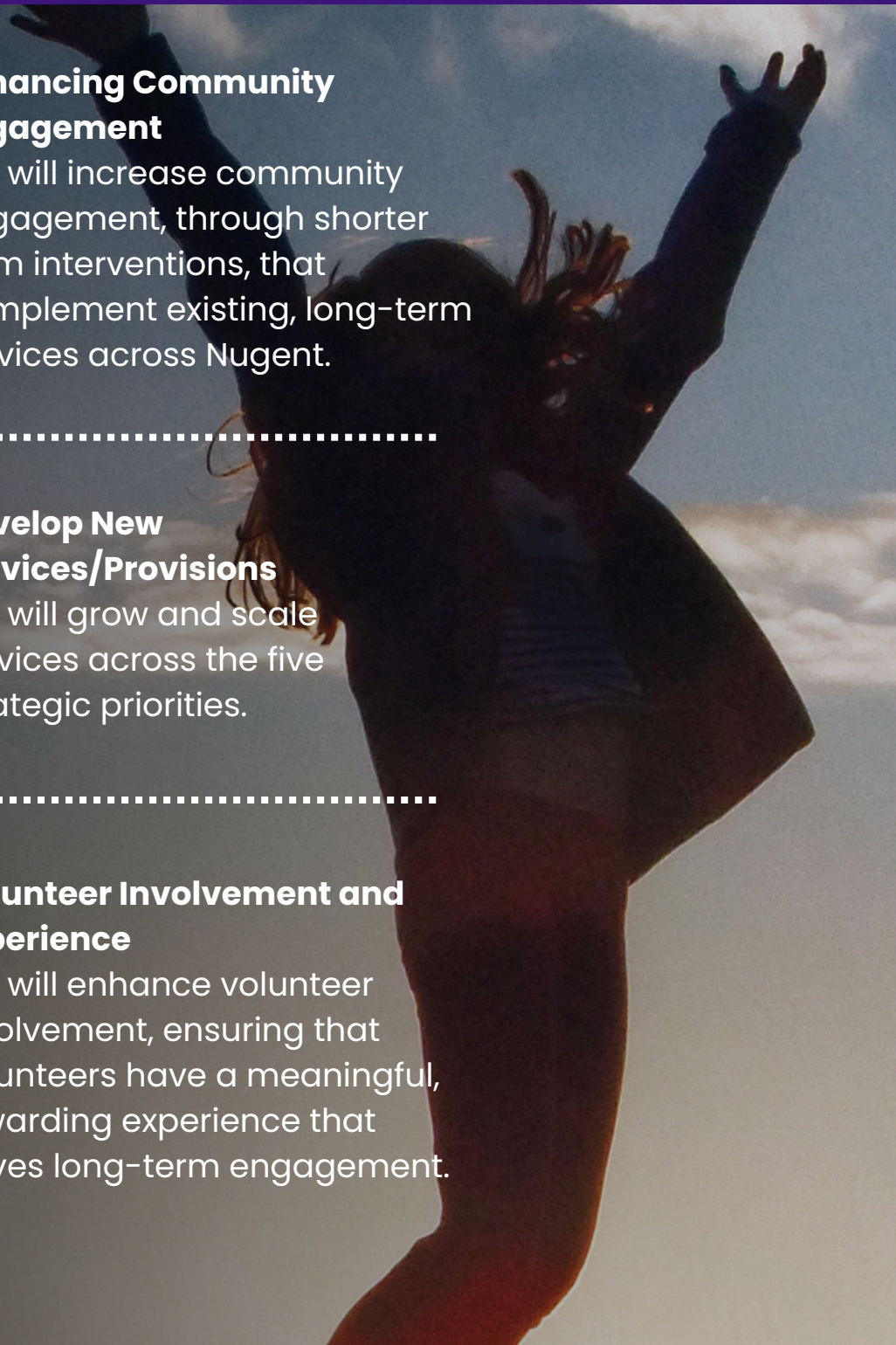
Develop New Services/Provisions

We will grow and scale services across the five strategic priorities.



Volunteer Involvement and Experience

We will enhance volunteer involvement, ensuring that volunteers have a meaningful, rewarding experience that drives long-term engagement.



WHAT IS OUR FUTURE NOW?

We recognise there are barriers and challenges that many in our communities' face and we at Nugent want to break down those barriers and meet those challenges.

Out of our desire to make a difference, Our Future Now was born. We will look for opportunities to provide individuals and communities with appropriate resources, and support networks vital to achieving stability and personal growth.

The latest figures about life across the Liverpool City Region make for tough reading. Life expectancy across our region is 2 years lower than the average across England, a third of all our neighbourhoods are in the 10% most deprived nationally and nearly a third of all residents experience long-term health conditions. But we know that these statistics only tell part of the story, we see the valuable work being carried out every day to ensure our families, friends and neighbours have access to the best opportunities and support.

Our Future Now will continue this valuable work and bring Nugent's vision of providing a lifelong pathway of support to those who need it. We will partner with other charities and community groups, schools and parishes to deliver effective ways to support those in need.

We can only do this important work with your help and support. If you'd like to get involved in our work, whether you want to hold a fundraising event, volunteer in our pantry or services or donate some goods to our shop, your support will help Nugent and Our Future Now to achieve great things.

Our Future now offers a range of services, each designed with care and expertise. Whether it's through our family support programmes or educational opportunities, we're here to empower and uplift.



FOOD PANTRY



DEAF AND SIGN COMMUNITY SERVICE



CHARITY SHOP



CARITAS

Scan the QR code to find out more about Our Future Now



OUR FUTURE NOW In Action



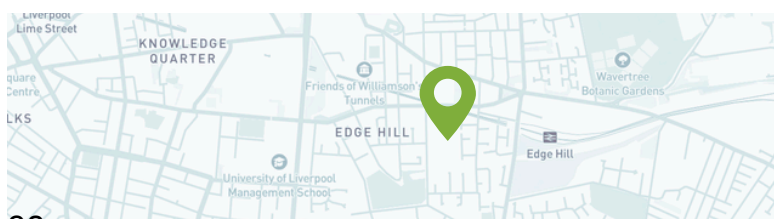
Nugent Pantry

Nugent Food Pantry has been running for three years and opens every Tuesday from 1–3pm. Based at St Anne’s Church in Edge Hill, the Pantry is open to everyone in our community. We believe everyone deserves equal access to good, nutritious food, which is why there’s no need to show proof of income or employment, our doors are open to all, every week.

Alongside food provision, the Pantry offers a relaxed and informal meeting place where people feel safe, welcomed and valued. Visitors can enjoy a cuppa, sometimes a slice of cake, and take the time to get to know each other and their neighbours. On an average week, we provide food to around 43 people.

The Pantry operates on a membership basis, with members paying a small weekly fee – currently £5 – and in return selecting at least 10 items of food. The Nugent Food Pantry is a fast-paced and welcoming environment, with many people coming through our doors each week.

We are always grateful for donations to help keep the Pantry running. If you or your organisation could support the Nugent Food Pantry by holding a food drive at work or school, please don’t hesitate to get in touch at fundraising@wearenugent.org. To find out more, visit wearenugent.org/services/community-services/food-pantry.



2025 IN STATS...

<h2 style="margin: 0;">1,350</h2> <p style="margin: 0; font-size: small;">visits to the Pantry since the start of 2025</p>	<p style="margin: 0;">Currently 95 approved members who shop on a regular basis</p>
<h2 style="margin: 0;">565</h2> <p style="margin: 0; font-size: small;">total number of people supported this year including 127 children</p>	<p style="margin: 0;">Average family food shop at Pantry would retail around £35 in a supermarket</p>
<p style="margin: 0; font-size: large;">£5 shop =</p> <p style="margin: 0; font-size: x-large;">x3 x7 </p> <p style="margin: 0; font-size: small;">Plus fresh fruit and veg and feminine hygiene products</p> <p style="margin: 0; font-size: x-small;"> = meat, cereal, fruit/veg etc = tinned items, bread, pasta etc </p>	<p style="margin: 0; font-size: small;">That’s an average saving of £27 each shop or £300+ per household over 12 pantry shops</p>
<p style="margin: 0; font-size: large;">Approx £25 savings to the shoppers in the L7 area</p>	

CELEBRATING OUR VOLUNTEERS



Meet Mary & Frank: The Heart of Our Nugent Pantry

Meet Mary and Frank, two of our amazing volunteers who have been part of Nugent's Pantry at St Anne's Church since it opened in November 2021.

Every Tuesday, they help set up the space, welcome pantry members, and offer friendly guidance and support as people do their shopping. They're always ready with a warm smile, a helpful suggestion, and often, a good chat too!

Over time, they've become a familiar and trusted part of the week for many of our regular members, building friendships and a true sense of community.

Volunteers like Mary and Frank are at the heart of what we do, creating not just access to food, but a place of dignity, connection and support.

Our Nugent Pantry could not operate without our volunteers, and we are hugely grateful to all our volunteers who each week choose to support our work. By volunteering your time, you will be helping Nugent Pantry provide food to those who need it in our city.

Hi I'm Lorna Masih, Volunteer Coordinator for Nugent.

I have worked for Nugent since 2019. My role focuses on recruiting, training and supporting new volunteers to help within Nugent services and within the wider community.

My favourite part about my role is meeting people and seeing how new volunteers develop and grow in confidence within their Nugent volunteer roles.



Volunteer Thanks

A massive thank you to Gleeds, Nugent volunteers and the students from Liverpool John Moores University for their fantastic support in December.

Each year Nugent receives donations of toys to distribute to children and families who might struggle to give or receive toys at Christmas. This year we received hundreds of toys from our supporters across parishes, schools and companies and businesses.

They generously gave their time to help sort through our Toy Appeal donations, ensuring everything was ready to be shared with schools across our local communities, helping to spread a little Christmas magic to children and families who need it most.

Last year, Nugent distributed almost 800 toys across 26 schools. In addition, we have also been able to hand out toys to families living in hostels and those at risk of homelessness. As a result, in 2025 over 400 children received presents via Nugent.



THE DIFFERENCE A BEFRIENDER MAKES

The Volunteer Befriender role plays a vital part within Nugent, giving the people we support the opportunity to meet new people, share interests, build confidence and form meaningful friendships.

Designed to be flexible, the role can fit around everyday life. Kaylee balances her volunteering alongside work and family commitments, showing that it's possible to make a real difference even with a busy schedule. She has been a Volunteer Befriender for nearly two years.

"I really enjoy spending time with Sue, we have had some trips to Southport and had some lovely lunches together!

Sue tried Greek food for the first time at Southport Food Market with the hope of trying Mexican food next time."

Kaylee, Volunteer, Margaret Roper House



THANK YOU TO THE ARCHDIOCESE OF LIVERPOOL

A huge thank you to The Archdiocese of Liverpool for their incredible generosity and continued support.

Over the Christmas period, £600 was raised through raffles and collections, and a further £500 was generously donated by the Parishes of St Columba and St John Fisher through their Christmas collections.

These amazing donations will help Nugent continue to support people and communities across our region. We are so grateful to everyone who donated, organised, and took part.

Thank you for making a real difference.



BECOME A NUGENT VOLUNTEER

Volunteering with Nugent can make a life-changing difference for those most vulnerable in our community while also enriching your own life by using your time, skills and experience to help others.

If you would like to find out more, please speak with Lorna Masih, Volunteer Coordinator, she can be contacted via email:

volunteers@wearenugent.org, or visit wearenugent.org/support-us/volunteering/



NUGENT VOLUNTEERING CALENDAR 2026

January Charity shop Food Pantry	February Random Acts of Kindness Day Donate Hygiene products to the Nugent Pantry	March World Book Day Collect Books for our Charity Shop Easter Egg Drive for our Food Pantry iACCORD Awards 19th March	April Charity shop Summer donation drive
May National Garden Day 10.05.26 Help to keep Nugent's Gardens nice for summer	June Good Shepherd Appeal Mass Liverpool Metropolitan Cathedral, Liverpool Volunteers Week 1-6 June 2026 Help support Nugent Services, Pantry and Charity Shop	July National Thank You Day 05.07.26 Organise a Pantry donation drive or collection for Nugent Pantry Write a Thank You card to someone who works / volunteers at our services.	August Charity shop Food Pantry
September Nugent Sleep Out 2026	October Charity shop winter stock turnover	November Nugent Gala	December Light up a Life Liverpool Metropolitan Cathedral Nugent Toy Appeal

Step away from the desk and into a day of purpose!

Volunteering is your chance to give back, build connections, and create real change.

Whether it's donating your time, expertise or helping our fundraising efforts, you will help us make a difference!

To find out more, contact

volunteers@wearenugent.org


Donations can be dropped off at our Head Office, 99 Edge Lane, L7 2PE, Monday to Friday, 9am-5pm.

nugent GALA

05.11.26

RUM WAREHOUSE
LIVERPOOL

Register your interest today:

 Gala@wearenugent.org

 our future
now
part of the **nugent** family

 Registered with
**FUNDRAISING
REGULATOR**



0151 261 2000



wearenugent.org



**99 Edge Lane,
Liverpool, L7 2PE**

visit our website

